

Limanowskiego 6/21, 30-534 Krakow



+48 515 322608, +48 606 363000



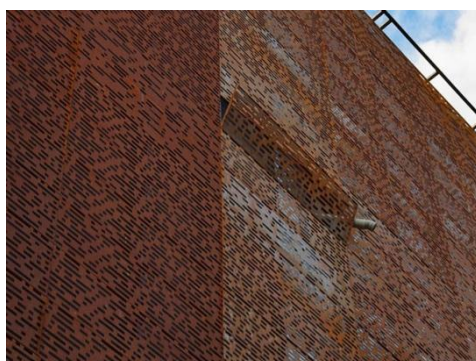
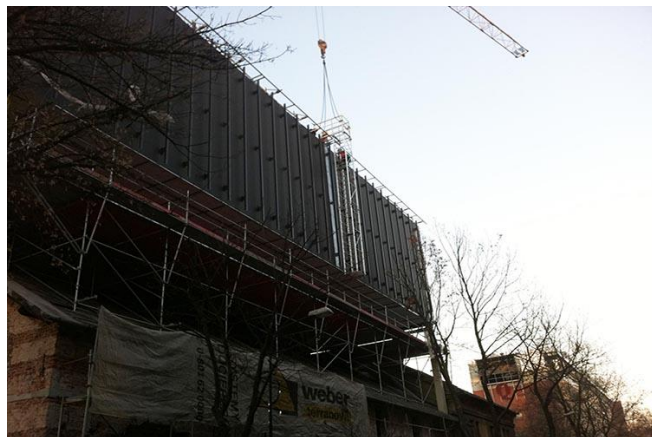
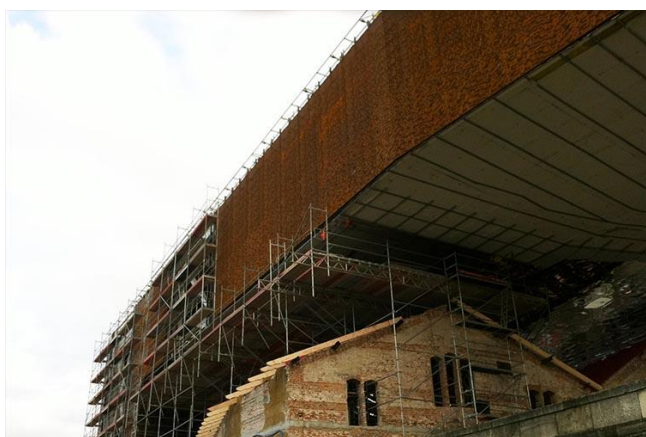
[info@gmlsystem.pl](mailto:info@gmlsystem.pl)

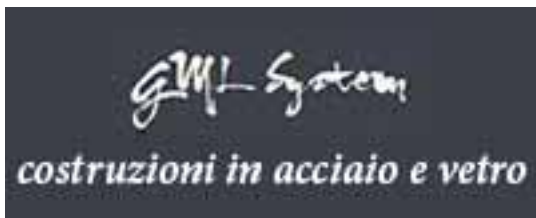


[www.gmlsystem.it](http://www.gmlsystem.it)

## Rivestimento di facciata con pannelli forati in acciaio corten (Prodotto LCH-F-CORTEN-1-S)

### Progetto di esempio





Limanowskiego 6/21, 30-534 Krakow



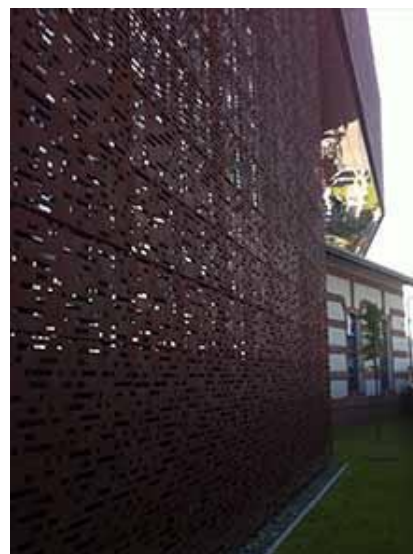
+48 515 322608, +48 606 363000



[info@gmlsystem.pl](mailto:info@gmlsystem.pl)



[www.gmlsystem.it](http://www.gmlsystem.it)



## Scheda Tecnica:

1. Materiale: acciaio corten con 1,5 mm di spessore,
2. Costruzione: cassette per facciate montate su telai di supporto in profili d'alluminio, acciaio o inox.